



# DIGIweb

The New Standard for Retail Software to manage all DIGI devices through a web-based solution

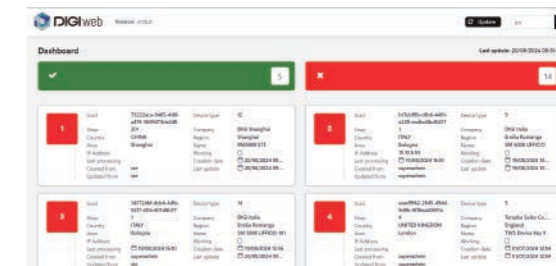


*Searching for a New Balance*



## All your DIGI devices at a glance

DIGIweb features an intuitive dashboard that provides a quick and easy way to monitor the status of your entire device network at a glance. Enjoy seamless oversight with a single, comprehensive overview that makes managing your devices simpler than ever.



## Control all devices with a single cutting-edge web-based platform

Introducing DIGIweb, the innovative web-based platform that streamlines all data management functionalities for DIGI devices. Built on the secure HTTPS protocol, DIGIweb ensures safe and reliable communication, enhancing the overall trustworthiness of our services. Perfect for Retail environments, DIGIweb is simple, user-friendly, and designed to cover every aspect of data management, making it ideal for any setting.



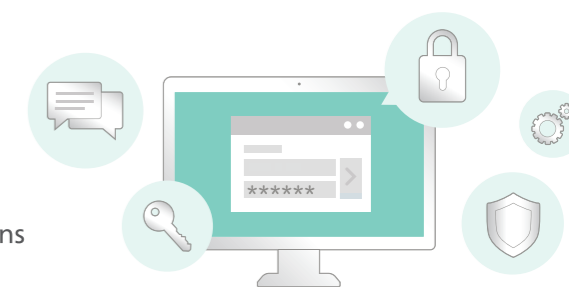
## 3rd party integration

Third-party software integration is a cornerstone of DIGIweb's functionality and versatility. Our platform includes guided wizard procedures that facilitate an intuitive setup process, allowing for straightforward integration with existing systems for efficient data exchange. This streamlined approach not only simplifies the initial deployment but also ensures that future expansions and updates can be managed with ease. DIGIweb provides the flexibility and compatibility needed to enhance and expand your operational capabilities.

## Maximum Security

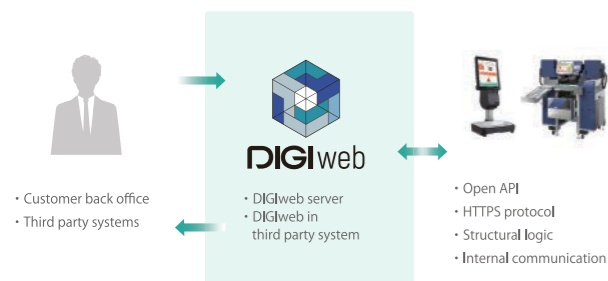
To ensure the new capabilities of DIGIweb, we have reviewed the current standard to maximize the company's network security. Safety doesn't only go through proprietary protocols, but through new standards:

- The data exchange between scales and software is secured by tokens
- Network communications are secured by HTTPS protocol



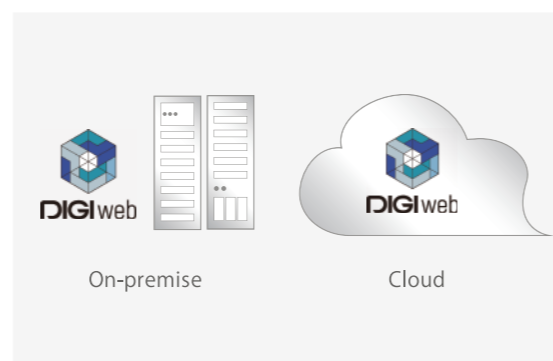
## Future-proof solution

DIGIweb embraces new standards to provide seamlessly integrative solutions for our customers. With features like Open API, HTTPS protocol communication, data in JSON telegrams, and a micro-services-based structural logic, DIGI ensures our solutions adhere to the latest industry standards for effortless integration and optimal performance.



## Installation on-premise or cloud

The installation of our system can be customized to suit the customer's specific needs, whether it's for a single store, a chain of outlets, or a multi-national enterprise. This flexibility ensures that we can cater to the requirements of any type of retail customer, providing robust solutions for both on-premise and cloud environments. By offering scalable and adaptable installation options, we can support the evolving demands of your business, ensuring seamless integration with your existing infrastructure and future growth plans.



## No restriction to access the software, device-wise or location-wise

With its cutting-edge web-based capabilities, DIGIweb seamlessly bridges the gap between hardware and software. Access your essential functions from anywhere, whether you're using scales, wrappers, PCs, or tablets. DIGIweb empowers users to connect effortlessly from any device and any location, ensuring unparalleled flexibility and convenience.



## Features

- **Logs**
- **User management**
- **UI for base management of:**
  - Configuration**  
Languages (UI), Entities (only for dev team), Widgets (only for dev team), Companies, Countries, Areas, Regions, Stores, Departments, Groups, Currencies, Weight UOM, Traceability counters, Barcodes, Fonts, Texts, License activation
  - Data**  
Plus, Allergens, Trays, Taxes, Images, Label formats, Clerks, Lot numbers, Lot number history
  - Import/Export**  
Import configuration management tool, Import operations, Multiline configuration, Export configuration, Export operations
  - Tool**  
Device types, Devices available into DIGIweb, Device status
- **Import wizard to create custom import process (file ascii/CSV, Database)**
- **Operations**  
DIGIweb operations, Device operations, Devices init operations, Transactions, Master data, Transactions history
- **Portal**  
Operations, Modules, Functions, Menu entries, Quick menu, Operators, Profile types
- **Report**  
Report templates, Report operations
- **Super Admin**  
Slaughter houses, Cutting houses, Track specifications, Suppliers, Races, Categories, Kinds, Mapping codes, Template, Label format fields, IFrame, Label format print conditions, Error messages, Transaction lots

# Specifications

## System requirements

*Suggested hardware requirements for on-premise installation (1 DIGIweb, up to 25 devices):*

<b>CPU:</b>	Min. 2 core; 4 core recommended
<b>Memory:</b>	Min. 4 GB free; 8 GB free recommended
<b>Storage:</b>	Min. 10 GB free; 50 GB free recommended
<b>OS:</b>	Ubuntu 22.04
	Others: Linux Distro following requirements for Docker Engine and Bash Windows 11/Windows server 2022 or great with WSL 2 distro on Ubuntu 22.04

## Docker requirements for Linux installation

To install Docker Engine, you need the 64-bit version of one of these Ubuntu versions:

- Ubuntu Noble 24.04 (LTS)
- Ubuntu Jammy 22.04 (LTS)
- Ubuntu Focal 20.04 (LTS)

Docker Engine for Ubuntu is compatible with x86\_64 (or amd64), armhf, arm64, s390x, and ppc64le (ppc64el) architectures.

## Docker requirements for Windows installation

- Windows 11 64-bit: Home or Pro version 21H2 or higher, or Enterprise or Education version 21H2 or higher
- Windows 10 64-bit: Home or Pro 21H1 (build 19043) or higher, or Enterprise or Education 20H2 (build 19042) or higher
- Enable the WSL 2 feature on Windows

**The following hardware prerequisites are required to successfully run WSL 2 on Windows 10 or Windows 11:**

- 64-bit processor with Second Level Address Translation (SLAT)
- 4GB system RAM
- BIOS-level hardware virtualization support must be enabled in the BIOS settings

## Docker requirements for MAC installation (iOS)

- macOS must be version 11 or newer, i.e. Big Sur (11), Monterey (12), or Ventura (13)

*We recommend upgrading to the latest version of macOS.*

## Compatible products series:

4600 Series

5600 Series

5600II Series

DPS-5000 Series

Infotag Series

RM-5800 Series

SM-120 Series

SM-5300 L Series

SM-5300X Series

SM-5500 G Series

SM-6000 Series

*Specifics are subject to change without notice.*

TERAOKA SEIKO Co., Ltd.

13-12 Kugahara 5-chome, Ohta-ku,  
Tokyo 146-8580 JAPAN  
www.digisystem.com

**DIGI** Group